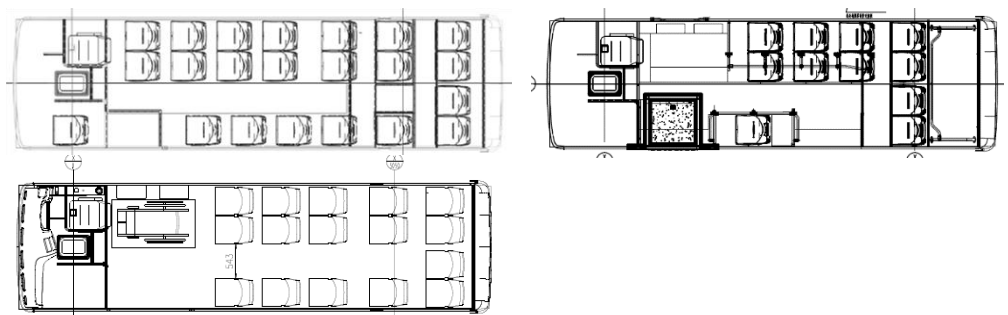



Internal layout

EV70 specifications

Basic Parameters	Model	EV70
	Fuel	Battery Electric
	LHD or RHD	RHD
	Passenger Capacity	1 Driver – 13 / 18 / 22 Passenger options
	Dimension (L*W*H, mm)	6990×2100×3050 (Base Model)
	GVM (kg)	8,000
	Tare (kg)	5,680
	Approach/Departure angle (degrees)	TBA
	Min. Turning Diameter (m)	TBA
	Max. Grade (% , 1 min)	20%
	Continuous Max. Grade (%)	15%
	Top Speed (km/h)	80
Range	≥300km	



EV70 specifications continued

	Description	Standard	Component Brand
Power System	Traction Battery	114 kWh	✓ CATL
	Hydrogen Fuel Cell	N/A	N/A
	Drive Motor	Dana eS5700r e-Axle	✓ Dana
	Controller	HV Inverter	✓ Dana
	Hydrogen Tanks	N/A	N/A
	Air Compressor	Electronic air compressor	✓ E-Piston
	Steering Pump	Electric steering pump	✓
Chassis	Suspension	Air suspension	✓
	ECAS	WABCO	✓ WABCO
	Front Axle (1)	Disc brake – Steer axle	✓
	Rear Axle (2)	Disc brake – Drive axle	✓
	Rear Axle (3)	N/A	NA
	Tire	215/75R17.5	✓
	Rim	Aluminum	✓
	Steering System	Hydraulic power steering	✓ E-Pump
	Braking system	WABCO EBS braking system	✓ WABCO
Safety and Electrics	ADAS	Lane departure warning system	Mobyleye
	Dashboard	ACTIA	✓ ACTIA
	Camera System	Reversing cameras and buzzer	✓ Included
	Exterior Lamps	LED	✓
	LV Battery	24V maintenance free	✓
	A/C	Cooling and heating A/C	✓ Valeo
	Floor heater	Driver's area heating	N/A
	Fire Extinguisher	HV compartment	✓
	Demister	PTC heater	✓
	Body	Body Structure	Monocoque structure, imported stainless steel
Body Style		City Bus – New Energy style	✓
Wheelchair Ramp		Flip out ramp	✓
Side Window		Tempered glass – Emergency exits	✓
Floor Mats		N/A	
Floor		Vinyl	✓
Destination Sign		Front and side standard	✓ AngelTraxx
Rear-view Mirror		Camera mirrors	✓ AngelTraxx
Front Service Door		Inward Glider	✓ Ventura
Middle Service Door		Inward Glider (Optional)	✓ Ventura
Driver Seat		Air ride driver's seat with seatbelt	✓ ISRI
Passenger Seat		Standard fixed seat	✓ Fainsa
USB ports		In dash	Optional
Wiper		Dual Arm	N/A
Bell Press System		Wireless	✓
Hand poles		Powder coated	✓

